



18 WATT STREET, SPRINGVALE

*The lotus symbolizes grace, enlightenment, perfection and honour.
The lotus symbolises life.*





grace

The Lotus apartments blend traditional appeal with modern aestheticism to reflect a skillful fusion of architectural influences.

Set within beautifully articulated landscaping, each of the 9 townhouses within this development boasts 2 stylishly-designed, bedrooms and bathrooms and 2 multi-purpose living areas.



Artists Impressions



perfection

Well-appointed finishes and details give each area a contemporary feel and highlight positive elements of design and dimension.

All fittings, including stainless steel kitchen appliances, have been chosen to reflect quality and function in line with the style and modern features of each space.

Each apartment also features a security intercom system, split system air-conditioning, European laundry and a secured garage.



Artists Impressions

enlightenment

Every floorplan effortlessly integrates the outdoors with contemporary apartment living and includes a manicured front yard, generously-proportioned back yard and a private balcony.

An abundance of natural light is captured through large, strategically-placed windows to create a bright and spacious ambience.



honour

Sustainable design elements further add to The Lotus Apartments' appeal as an ideal lifestyle choice or property investment.



Artists Impressions



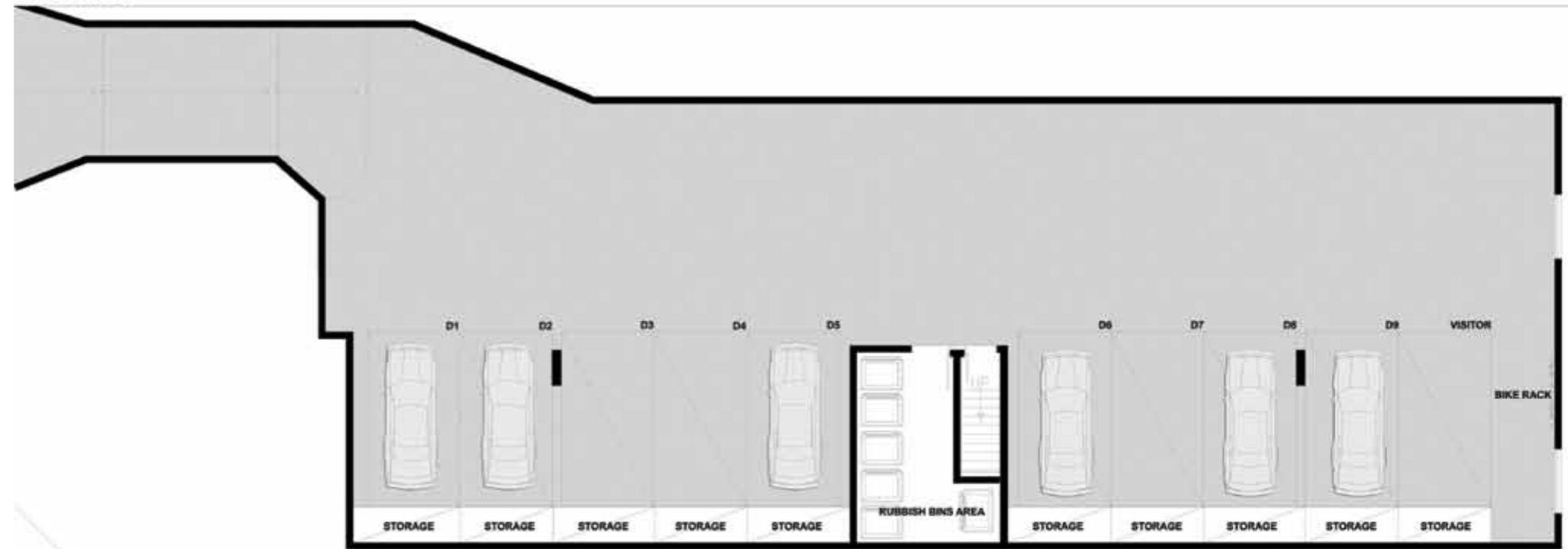
life Bustling with fresh-food markets, restaurants and destination shopping, Springvale encapsulates Melbourne's most vibrant multi-cultural lifestyle.

The Lotus Apartments are in close proximity to local amenities and are easily accessible to various forms of public transport as well as Melbourne's major arterial networks.



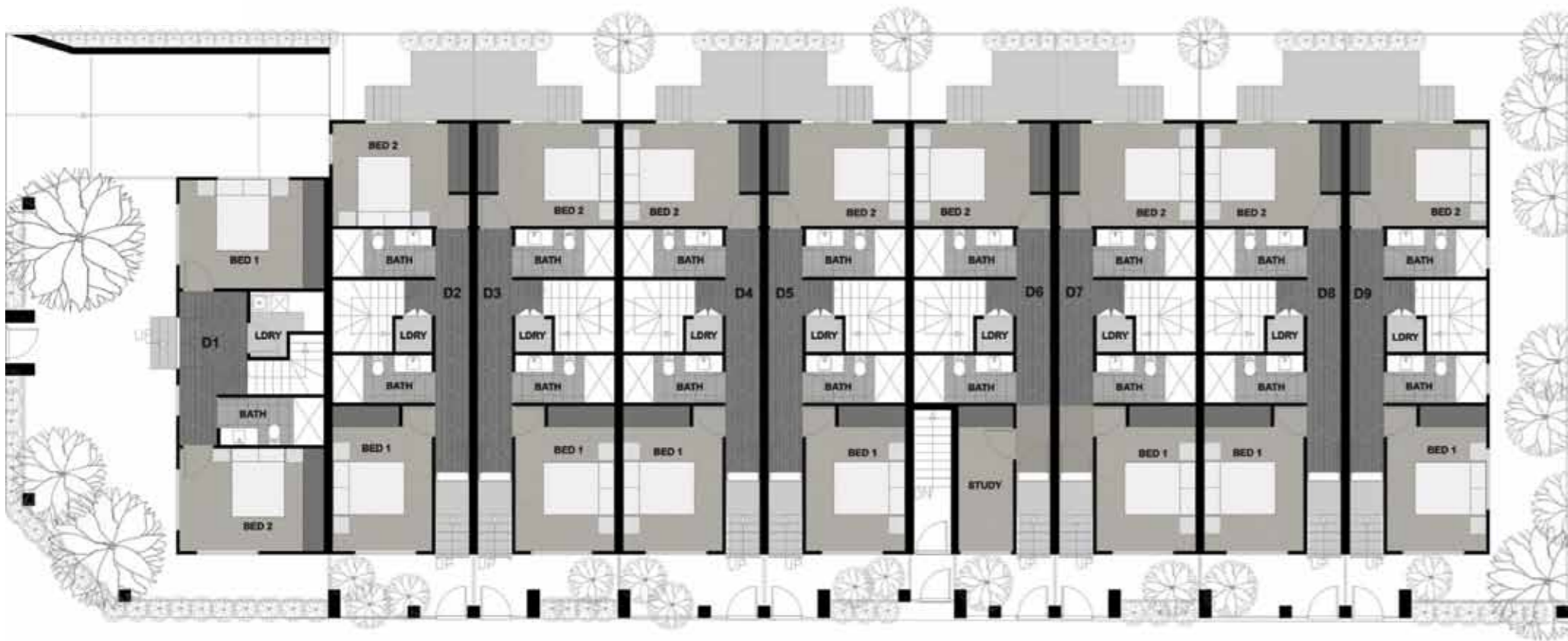


basement floor



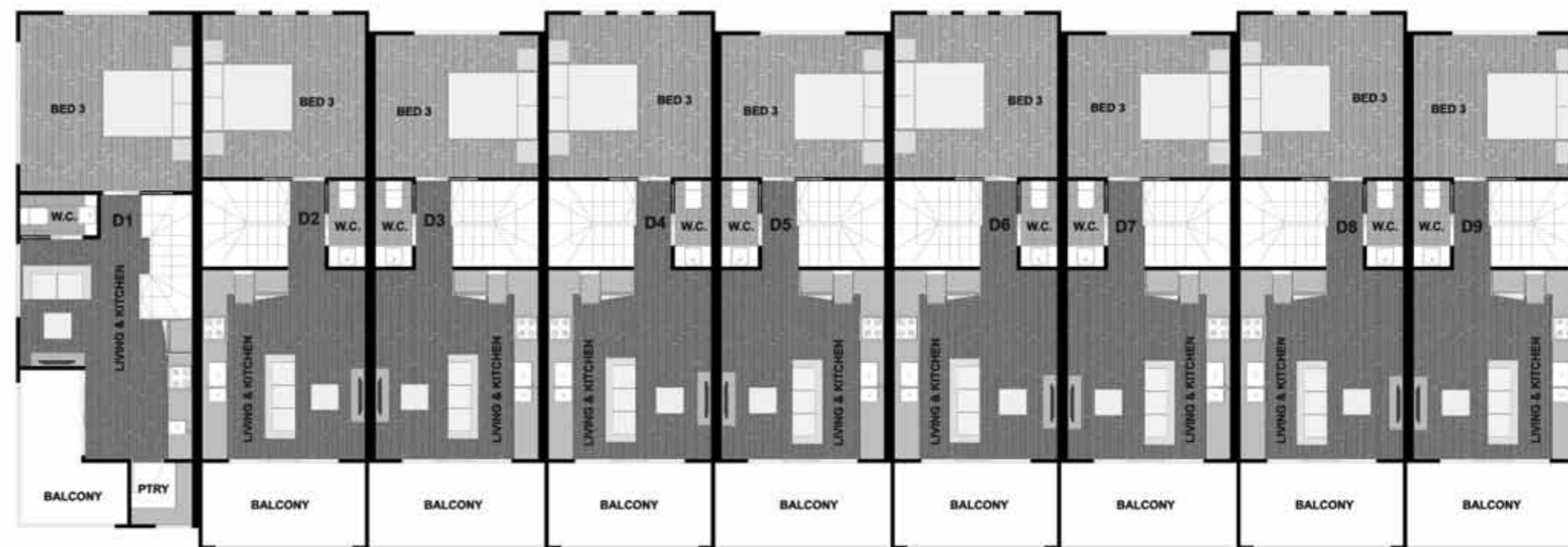
specifications

- Reverse cycle split system air conditioning system
- Down lights to all ceilings
- Aluminium framed windows.
- Full height porcelain tiles to all walls in bathrooms & ensuite.
- Porcelain tiled floors in bathrooms & ensuite.
- Wool carpet in bedroom floors.
- Timber floor in open living areas.
- Porcelain tiles in balconies.
- Interior cabinets in laminate finish.
- Stone bench tops in kitchens & vanity units.
- Stainless steel kitchen appliances (oven, range hood & cooktop)
- Stainless steel dish washer.
- Semi frameless shower screens.
- Stainless steel sinks in kitchens.
- Paco Jaanson kitchen & sanitary fixtures.



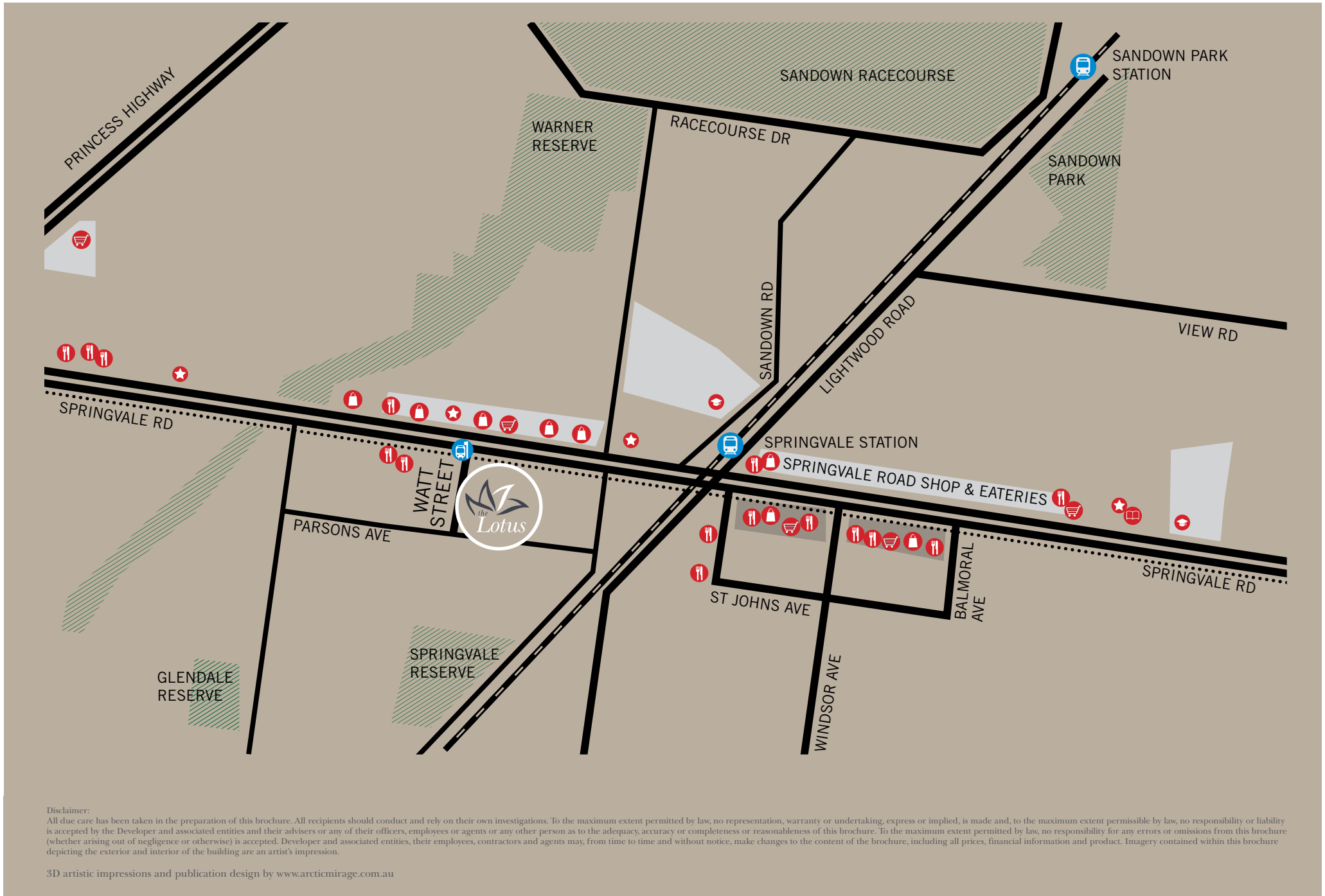
ground floor

DWELLING	GROUND	FIRST	TOTAL LIVING	BALCONY	OUTDOOR
1	49 m ²	48 m ²	97 m ²	8 m ²	67 m ²
2	54 m ²	48 m ²	102 m ²	9 m ²	19 m ²
3	54 m ²	45 m ²	99 m ²	9 m ²	18 m ²
4	54 m ²	48 m ²	102 m ²	9 m ²	19 m ²



first floor

DWELLING	GROUND	FIRST	TOTAL	BALCONY	OUTDOOR
5	54 m ²	45 m ²	99 m ²	9 m ²	18 m ²
6	49 m ²	48 m ²	97 m ²	9 m ²	16 m ²
7	54 m ²	45 m ²	99 m ²	9 m ²	18 m ²
8	54 m ²	48 m ²	102 m ²	9 m ²	19 m ²
9	54 m ²	45 m ²	99 m ²	9 m ²	59 m ²



Disclaimer:

All due care has been taken in the preparation of this brochure. All recipients should conduct and rely on their own investigations. To the maximum extent permitted by law, no representation, warranty or undertaking, express or implied, is made and, to the maximum extent permissible by law, no responsibility or liability is accepted by the Developer and associated entities and their advisers or any of their officers, employees or agents or any other person as to the adequacy, accuracy or completeness or reasonableness of this brochure. To the maximum extent permitted by law, no responsibility for any errors or omissions from this brochure (whether arising out of negligence or otherwise) is accepted. Developer and associated entities, their employees, contractors and agents may, from time to time and without notice, make changes to the content of the brochure, including all prices, financial information and product. Imagery contained within this brochure depicting the exterior and interior of the building are an artist's impression.

3D artistic impressions and publication design by www.arcticmirage.com.au